



Boston WorkStation

Boston WorkStation™ is task automation and integration technology that allows healthcare organizations to automate manual tasks, manage workflow and improve productivity.

Like training an electronic employee

Healthcare organizations use Boston WorkStation to easily automate a variety of processes such as:

- > Automating remittance posting
- > Real time insurance eligibility
- > Automating transcription uploads
- > Updating payroll or employee information
- > Real time unattended ADT interfacing
- > Results reporting
- > Generating and printing reports ...

and literally hundreds of other tasks.

Because Boston WorkStation can reliably read from, write to, or react to what happens on an application's screen, hospitals are building more complex processes that require decision-making, branching logic and notifications with even hostile or closed systems.

Hospitals around the world use Boston WorkStation to automate tasks that require:

- > the navigation of many screens
- > the ability to reliably handle exceptions
- > use other screens, files or messages as data sources
- > remote management of users to insure compliance with business rules.

Using Boston WorkStation, hospitals can respond to business requirements such as self-serve registration, accelerated revenue cycles, automated results reporting, or real time eligibility checking. And, they are using Boston WorkStation to respond to strategic initiatives such as EHR adoption, ICD-10 updates and RAC audits.

Not your typical scripting tool

Boston WorkStation (BWS) is a powerful scripting technology that goes beyond just recording keystrokes. While hundreds of hospitals successfully automate time consuming manual tasks, they are doing much more. Traditional scripting is generally limited to linear processes, but BWS automates even tasks requiring branching logic, having exceptions or unexpected errors. A linear approach does not naturally handle exceptions, branches or conditional logic. With some scripting tools you need to get in and write code for such processes, but not with BWS.

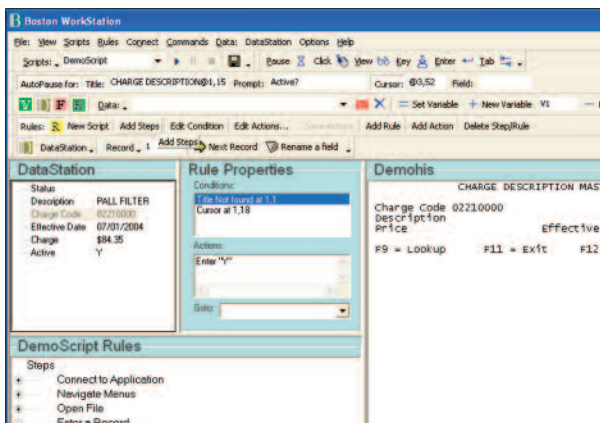
Rules-based scripting

Based on the simple logic one would use to develop any process, script development begins with outlining the general steps to completion, such as Connect, Login, Open File, etc. From there the specific rules detailing those steps are filled in. As the user proceeds, BWS creates a graphical tree-style representation of the development process, allowing developers to see where exceptions might take place, and

BOSTON WORKSTATION: The Automation Standard

create the appropriate mechanisms for handling them. Within the main user interface, the developer has several views of the tools he uses. From the graphical outline, he may focus in on the specific detail of the script as it is built, or he can also see the application he is working with in the application viewer as they are manipulated, and have a clear view of specific data as it is parsed.

Boston WorkStation's unique "integrated scripting environment" allows users to develop, test and run scripts all from the same user interface and provides access to all of BWS scripting features.



The electronic manager

Boston WorkStation allows development of scripts that virtually watch over the user's shoulder to remotely monitor and manage how a user interacts with information on their screen. It not only watches screen activity, it allows the script to respond to keyboard use and mouse clicks. These powerful scripts can respond as a manager might to enforce policies, stop an action, post a query screen, kick off another process, send an email notification or other action. Additionally, BWS uses script repositories to provide users with the ability to report activities, information and statistics relative to employee or script performance.

Capabilities for graphical applications

Unmatched connectivity capabilities are a hallmark of Boston WorkStation. The Smart feature expands the product's connectivity capabilities by taking a unique, non-positional approach to locating and interacting with graphical elements. This allows Boston WorkStation to see and do more than any other screen-based scripting tool. It is well-suited to work with Windows applications, browser-based applications, as well as Java applications and applets. Smart allows users to more easily script to many of the systems and applications used in the healthcare industry such as Siemens Soarian®, IDX Groupcast™, PeopleSoft, many practice management systems and any other windows based applications.

Simplified data parsing

The DataStation feature provides a built in, graphical parser that supports a wide range of file and message formats. These include fixed length and delimited, Microsoft Office (Excel, Access, Word), printed text reports, ASTM, HL7, X.12 and XML. Once parsed, the script developer can select individual data fields to be keyed into a screen.

"We use Boston WorkStation to run reports, to complete other routine work, and for special projects. And the support is amazing - Boston Software Systems will help you over the phone if you're stuck on how to get something done. The plus side of Boston WorkStation is that it isn't limited to Meditech, you can use it to script into almost any product including web pages."

*Michael Laban
Eastern CT Health Network*

Scripting the Internet

Boston WorkStation also, allows users to automate the operation of their Web browser by recording the actions of users as they call up Web pages and read and update the information on those pages. BWS also generates data handling commands to read and write information on the web page and to create, remove and modify data.

Easy script scheduling

Boston WorkStation scripts can be set up to run unattended at a set time, in real time, or on a batch basis. Scripts may be scheduled to run only once, once an hour, a day, a week, a month or at a frequency stated in seconds, minutes, hours or days. The scheduling feature is easy to use and provides the user with feedback to immediately see the implications of scheduling changes; predictability in future actions, a log of past events so that script behavior may be monitored; and the capability of operating multiple schedule engines on the same PC.

Logging and Reporting

To assist with testing and maintenance, Boston WorkStation provides built in logging. The script can keep track of the steps through which the script proceeded, every action performed, user defined notes and even display information about the screens it encountered. A report can be generated in Excel, Access, CSV or any convenient report format.

Print Controller for Meditech C/S

The Print Controller feature allows Meditech Client/Server sites to easily schedule any type of report for printing or distribution at any defined interval. An easy to use configuration wizard is designed specifically for Meditech C/S screens making the setup very simple and customizable to your unique needs. Notification to any number of users is provided, along with dialog prompts such as Print, Download, Archive and e-Mail notification.

Message management

Boston WorkStation provides a variety of messaging pathways for external communication, including email via SMTP, FTP, TCP/IP, SOAP, SNMP, and the Citrix shared clipboard. BWS can interact with message queuing systems such as MSMQ and also provides an internal queuing system, allowing the creation of by-directional scripts that interact with messages from interface engines or by listening / sending directly to a port.

BOSTON WORKSTATION: The Automation Standard

We have over a thousand different Boston WorkStation scripts scheduled to run on 9 different virtual servers. Our scripts range from automated printing, MARS queues, PDF downloads, vendor downloads, password changes, file transfers, etc, etc. That is only for Meditech C/S scripting. The product has a wide array of uses, and can be used for pretty much any application. Given its VBA backend, the possibilities are pretty much endless.

*Mitch Lawrence
Christus Health*

MEDITECH-specific features

Boston WorkStation extends the standard connectivity of Boston WorkStation to MEDITECHClient/Server 5.6 and 6.0 users. These new MEDITECH versions are completely redesigned making any previously written scripts unusable. They also lack the scripting application programming interface (API) found in previous versions of MEDITECH systems, making it impossible for scripting tools that connect to MEDITECH via these APIs to function.

The Navigate command affords MEDITECH users greater flexibility when working with character- and graphic-based menus to find an item based on its name. Rather than relying on arbitrary numbers of directional arrows to select an item, Navigate reads the screen to find the item a user needs. Navigate may also be used to look up lists where a script needs to a text item.

In addition, Boston WorkStation offers built-in support for all MEDITECH dialog boxes. Users do not need special commands or connections to handle dialog boxes as they write a script. Instead, users can see and script typical dialog boxes, such as Save As, Select Connection or pop-ups within NUI, as if they were regular MEDITECH screens.

Universal connectivity

Boston WorkStation is PC-based software that offers universal connectivity allowing for the flexibility of PC, minicomputer or mainframe connectivity and easy development on any Microsoft operating platform. BWS contains a unique set of scripting components to connect to any screen that could run on a Windows PC such as off the shelf terminal emulators, Windows applications, or websites. It can even interact with purely graphical screens like Citrix sessions. In addition, it has built-in connections to specific HIS displays like CPSI, IDXTerm, McKesson HBOWem, Meditech Client/Server, and all versions of Meditech Remote WorkStation. BWS is proven to connect with all integration engines including Microsoft BizTalk®. It is also backward compatible with earlier versions of Boston WorkStation.

Find out more about Boston WorkStation and how our customers are using it to save time and money by visiting our website at www.bostonsoftwaresystems.com or call us at 866.653.5105.

